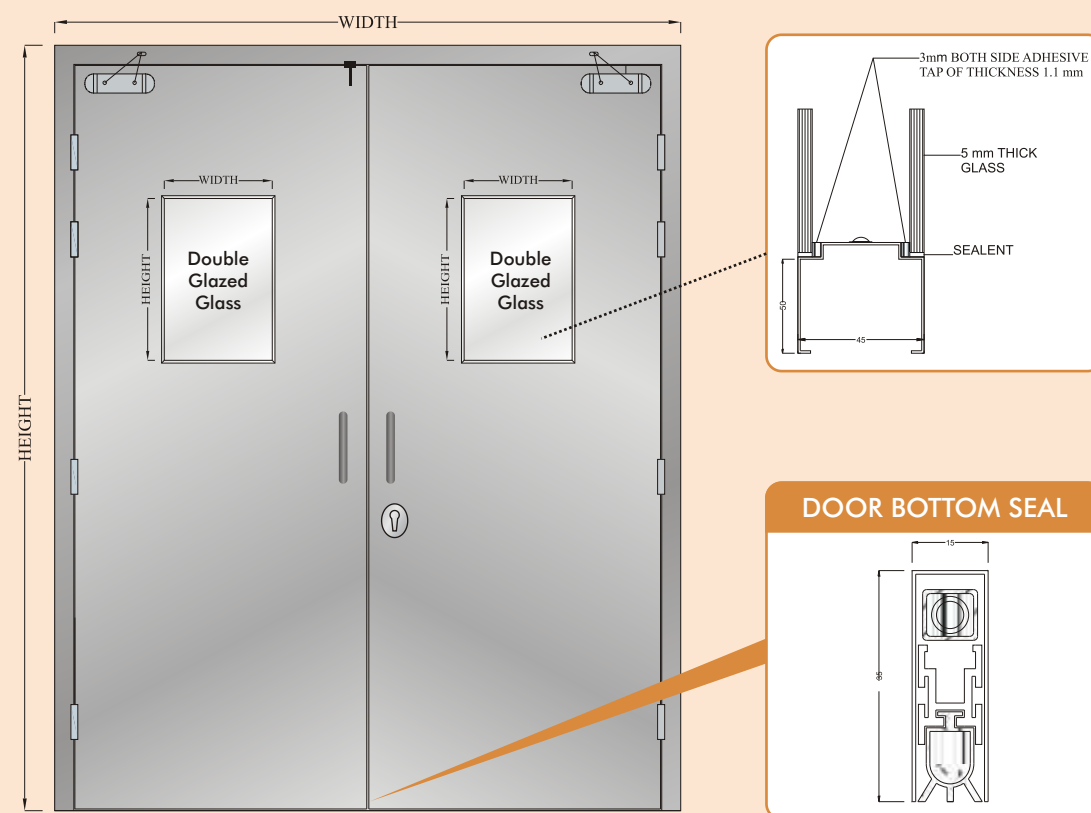


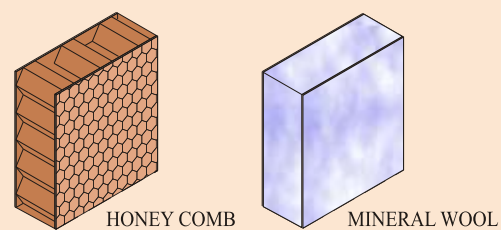
NAVAIR

INTERNATIONAL PVT. LTD.

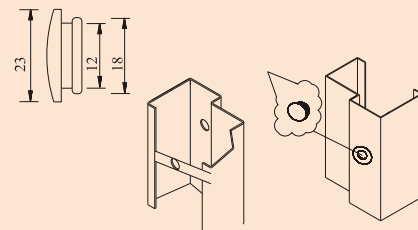
SCIENTIFIC / CLEAN ROOM STEEL DOOR



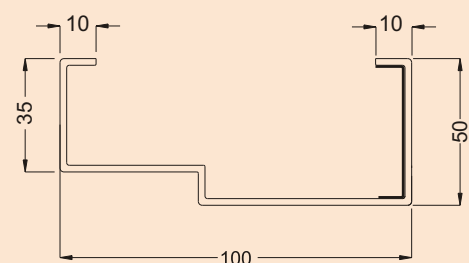
INNER FILLING



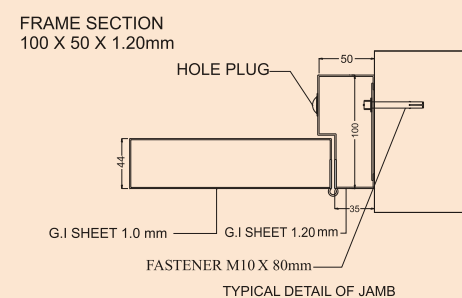
ANCHOR COVER



FRAME SECTION



STEEL FRAME & SHUTTER SECTION



Door Type	Scientific door
Criteria	Clean Room
Rating	Not Applicable
Door Thickness	44 mm
Standard	Clean room
Application	Hygeine

CONSTRUCTION DETAILS

Detail Description

- 1 Steel frame Profile Design- NCL 100 x 50
- 2 Frame manufactured with 1.2mm Galvanised Steel
- 3 Shutter Thickness - 44mm
- 4 Shutter infill- Honeycomb/Mineral wool
- 5 Shutter manufactured with 0.8/1 mm Galvanised Steel
- 6 Double Glazed Glass as per requirement (5mm each)

Recommended Hardware

- 1 Stainless steel Ball Bearing Hinges - SUS 304 of size 100mm x 75mm x 3mm
- 2 Door Closer- Having capacity up to 60 kg per leaf / Shutter
- 3 Mortise Dead Lock Set with 70mm long Cylinder and estucheon- complete set with D Shape Pull Handle for pull side and push plate (SS 304) on Push side
- 4 Mortise Sash Lock with 70mm long Cylinder, estucheon, lever handle - Complete Set for Push/Pull operation
- 5 Automatic Mortised Drop Down Door Bottom Seal
- 6 Perimeter Seal All around Frame

Optional Hardware

- 1 Door Coordinator
- 2 Concealed Flush bolt
- 3 Dust Proof Strike

Recommended Finisher

- 1 Powder Coating in desired RAL Shade Code
- 2 SS304 Matt / Glossy Finish on demand





Indian Green Building Council



केंद्रीय भवन अनुसंधान संस्थान, रुड़की
CENTRAL BUILDING RESEARCH INSTITUTE, ROORKEE
(A Constituent Establishment of CSIR)



Corporate Office:

Navair International Pvt. Ltd.

59/17 Guru Ravidas Marg, 2nd Floor, Kalkaji Extn, New Delhi



+91-11-46865000



marketing@navairindia.com
info@navairindia.com



Website: www.navairindia.com