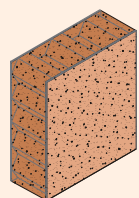


NAVAIR

INTERNATIONAL PVT. LTD.

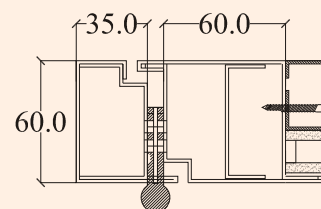


INNER FILLING

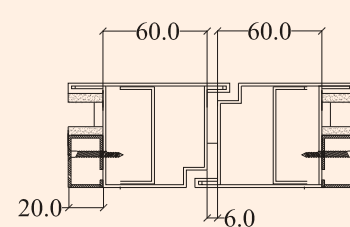
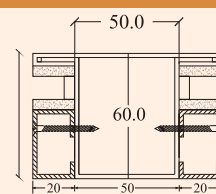
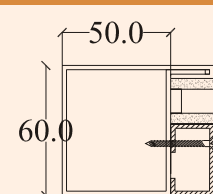


WOOL INSULATION

FRAME SECTION


DOOR SIDE SHUTTER
AND FRAME

DOOR MEETING STILL


SECTIONAL DETAILS OF MULLION
MEMBER FOR FIXED PARTITION

SECTIONAL DETAILS OF
FIXED PARTITION


Door Type	Steel Glazed Fire Door
Criteria	Stability & Integrity with partial insulation as per NBC Guideline
Rating	120 mins
Fire Glass Thickness	11/13mm (Interlayered FR Glass with Radiation Control as per NBC 2016)
Shutter Thickness	60 mm
Testing Standards	BS 476 Part 20 - 22
Test Laboratory	Certifire, Exova Warrington Fire Research Laboratory, United Kingdom

CONSTRUCTION DETAILS

Detail Description

- 1 Steel frame Profile Design - NSF6070
- 2 Frame manufactured with 1.6mm Galvanised Steel
- 3 Shutter Thickness - 60mm
- 4 Shutter Infill insulation - Mineral wool Infill treated with VIPER FRS 881 LH
- 5 Shutter manufactured with 1.6mm Galvanised Steel
- 6 Tested with Fully Glazed Panel for 120 minutes rating with Saint Gobain 11/13mm thick Saint Gobain Contraflam Lite Fire Rated Toughened Glass
- 7 Tested with Top & Side Light Panels for 120 minutes rating with Saint Gobain 14mm thick Saint Gobain Contraflam Lite Fire Rated Toughened Glass

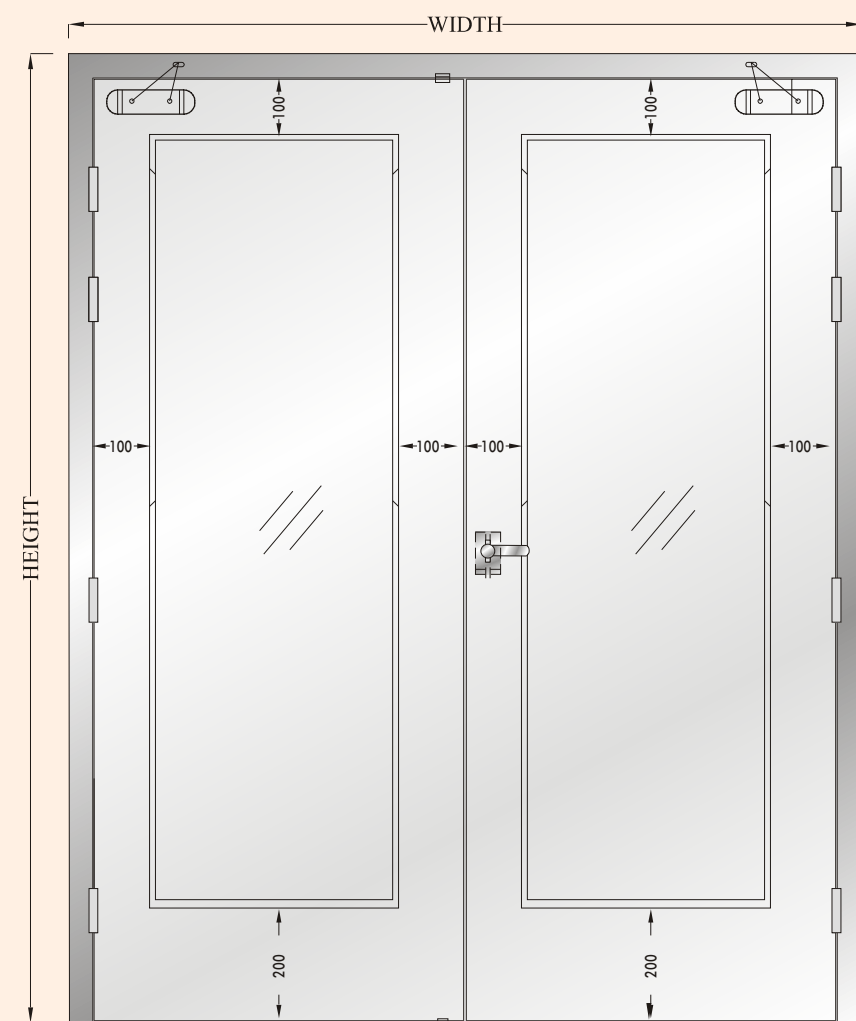
Recommended Finishes

1 Frame & Shutter

- 1.1 Powder Coating in desired RAL Shade Code
- 1.2 Polyurethane Coating in desired RAL Shade Code
- 1.3 Selective Wood Grain Finishes available

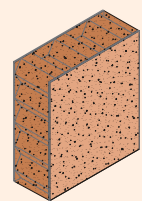


*The Above sketches are only indicative, actual products may vary.



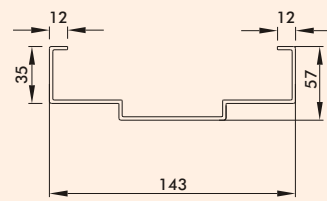
DOUBLE LEAF

INNER FILLING



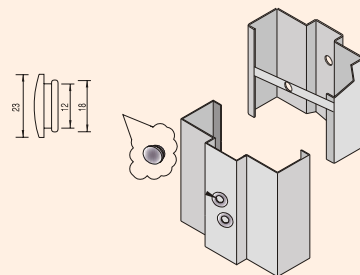
WOOL INSULATION

FRAME SECTION

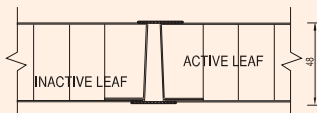


NDRF 143 x 57

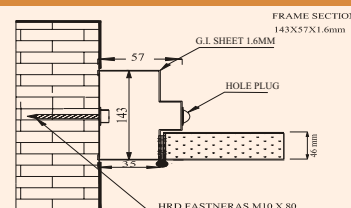
ANCHOR COVER



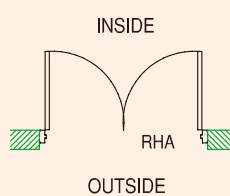
ASTRAGEL DETAIL



TYPICAL DETAIL OF JAMB



ANCHOR TYPE



*The Above sketches are only indicative, actual products may vary.

Door Type	Steel Fire Rated Glazed Door
Criteria	Stability & Integrity with Infill insulation material
Rating	120 mins
Fire Glass Thickness	11 mm (Interlayered with Radiation Control as per NBC 2016)
Shutter Thickness	46 mm
Testing Standards	BS 476 Part 20 - 22, IS 3614 Part 2
Test Laboratory	CBRI Roorkee, India

CONSTRUCTION DETAILS

Detail Description

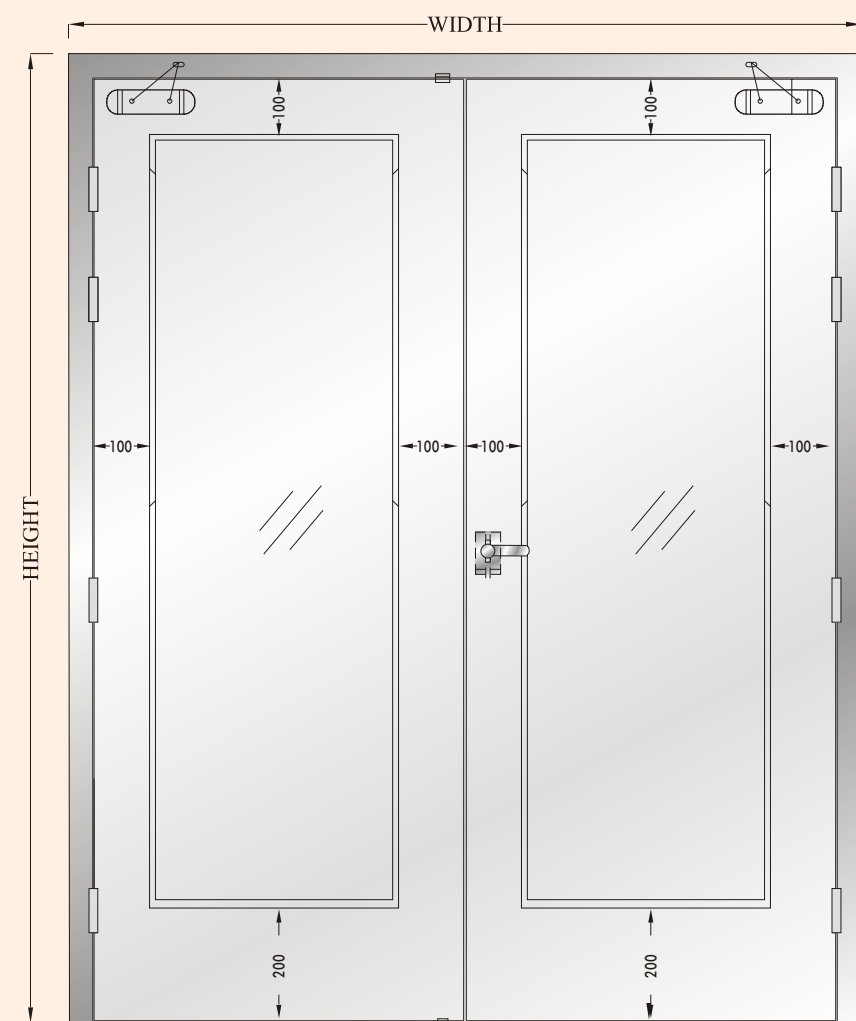
- 1 Steel frame Profile Design - NDRF 143 x 57
- 2 Frame manufactured with 1.6mm Galvanised Steel
- 3 Shutter Thickness - 46mm
- 4 Shutter infill insulation - Wool insulation infill treated with VIPER FRS 881 LH
- 5 Shutter manufactured with 1.2mm Galvanised Steel
- 6 Tested with Vision Panel for 120 minutes rating with Saint Gobain make Fire Rated Toughened Glass

Recommended Finishes

Frame & Shutter

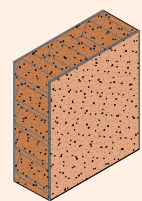
- 1.1 Powder Coating in desired RAL Shade Code
- 1.2 Polyurethane Coating in desired RAL Shade Code
- 1.3 Selective Wood Grain Finishes available





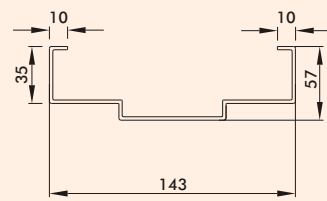
DOUBLE LEAF

INNER FILLING



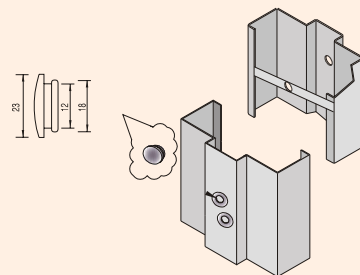
WOOL INSULATION

FRAME SECTION

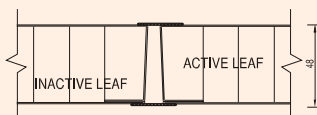


NDRF 143 x 57

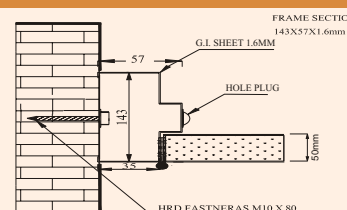
ANCHOR COVER



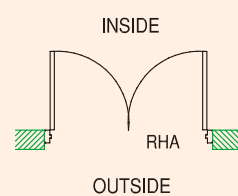
ASTRAGEL DETAIL



TYPICAL DETAIL OF JAMB



ANCHOR TYPE



Door Type	Steel Fire Rated Glazed Door
Criteria	Stability & Integrity with Insulation Material
Rating	60 mins
Fire Glass Thickness	6 mm Monolithic Toughened FR Glass
Shutter Thickness	50 mm
Testing Standards	BS 476 Part 20 - 22, IS 3614 Part 2
Test Laboratory	Thomas Bell - Wright (Dubai)

CONSTRUCTION DETAILS

Detail Description

- 1 Steel frame Profile Design - NDRF 143 x 57
- 2 Frame manufactured with 1.6mm Galvanised Steel
- 3 Shutter Thickness - 50mm
- 4 Shutter infill insulation - Wool insulation infill treated with VIPER FRS 881 LH
- 5 Shutter manufactured with 1.6mm Galvanised Steel
- 6 Tested with Vision Panel for 60 minutes rating Fire Rated Toughened Glass

Recommended Finishes

1 Frame & Shutter

- 1.1 Powder Coating in desired RAL Shade Code
- 1.2 Polyurethane Coating in desired RAL Shade Code
- 1.3 Selective Wood Grain Finishes available

*The Above sketches are only indicative, actual products may vary.





Indian Green Building Council



केंद्रीय भवन अनुसंधान संस्थान, रुड़की
CENTRAL BUILDING RESEARCH INSTITUTE, Roorkee
(A Constituent Establishment of CSIR)



Corporate Office:

Navair International Pvt. Ltd.

59/17 Guru Ravidas Marg, 2nd Floor, Kalkaji Extn, New Delhi



+91-11-46865000



marketing@navairindia.com
info@navairindia.com



Website: www.navairindia.com