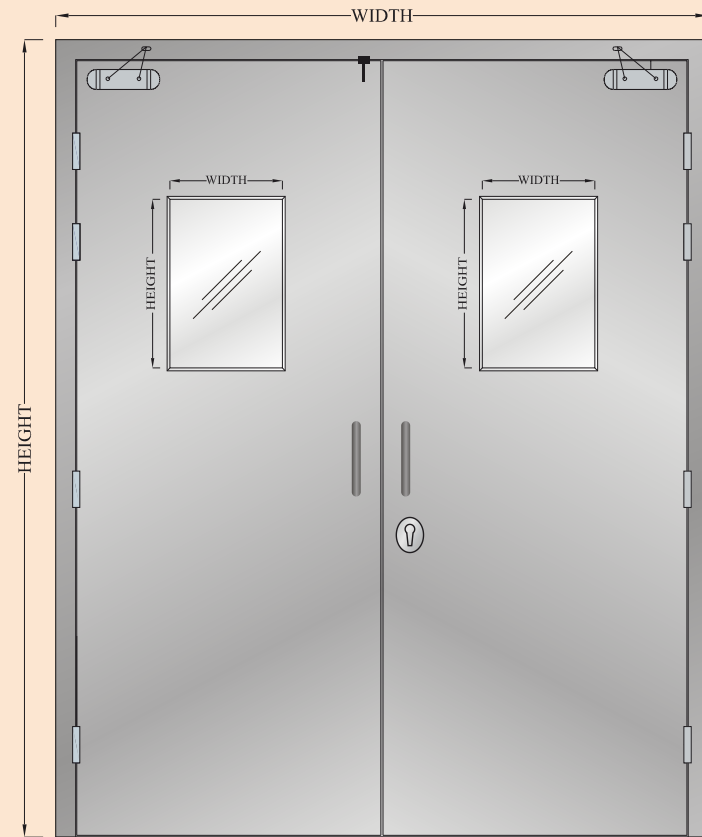
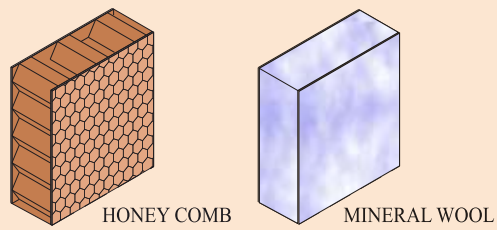


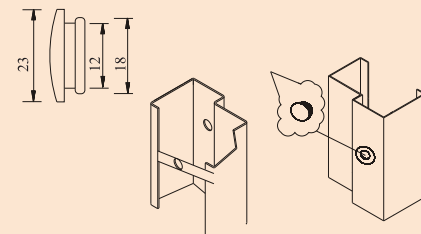
HOLLOW METAL PRESS STEEL DOOR (NON FIRE)



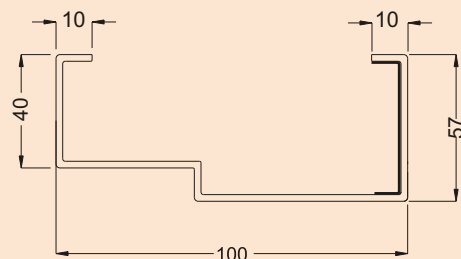
INNER FILLING



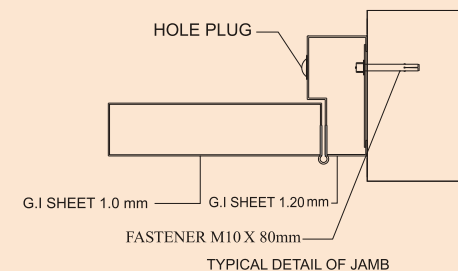
ANCHOR COVER



FRAME SECTION



STEEL FRAME & SHUTTER SECTION



Door Type	Hollow Metal Press Steel Door (HMPS)
Rating	NA
Shutter Thickness	38mm - 49mm
Test Laboratory	NA

CONSTRUCTION DETAILS

Detail Description

- 1 Steel frame Profile Design as per CPWD profile (A/B/C/D/E)
- 2 Frame manufactured with 1.2mm Galvanised Steel
- 3 Shutter Thickness - 38mm - 49mm
- 4 Shutter Infill - Honeycomb/Mineral wool
- 5 Shutter manufactured with 0.8/1 mm Galvanised Steel

Recommended Finishes

- 1 Powder Coating in desired RAL Shade Code
- 2 SS304 Matt / Glossy Finish on demand

Frame Profile As Per CPWD Specification

